



The Look That Sets You Apart





BLOOM SALON | Morristown, NJ



ARTISTIC IMAGE | Westport, CT



BLO SALON | Shelby Township, MI



SINE QUA WEST | Chicago, IL



WHIDBEY ISLAND SALON | Oak Harbor, WA



FORT WORTH BLOW DRY BAR | Fort Worth, TX



SPIFF | New York, NY



THE CANYON SALON | Westlake Village, CA



RHEANNE WHITE SALON | New York, NY



SALON DE CINZIA | Newton, MA



THE GLOSSARY SALON | Overland Park, KS



TRILOGY SALON | Indianapolis, IN





SALON CONCRETE | Red Bank, NJ

THE LOOK THAT SETS YOU APART

Today, salon and spa customers are looking for more than just the basics. As a beauty professional, you want to provide them with the amenities that they have come to expect. Our sales and design team at Takara Belmont can help you create an environment that will attract customers and make your business successful.

Bring your dreams to us and watch them come to life. Whether your project is large or small, we provide you with the assistance you need to create what you've always wanted. You can be confident that you're dealing with the industry's leader in innovation, quality, and breadth of options. You will know that everything you install in your salon is manufactured to exacting standards and built to last a lifetime.



SHOWROOMS & DESIGN CENTERS

CENTRAL MIDWEST
800-325-7373

NORTH MIDWEST
800-825-2725

MID-ATLANTIC
301-577-0212

ROCKY MOUNTAINS
800-478-6368

NEW ENGLAND
800-283-3222

SOUTHEAST
888-492-7292

NJ & PA
877-283-1289

SOUTHWEST
800-478-6368

NY & CT
212-541-6660

WEST COAST
949-916-3404



TODAY. TOMORROW. ALWAYS.



800-526-3847 | www.TakaraBelmont.com | [@TakaraBelmontUS](https://www.instagram.com/TakaraBelmontUS)



MODA Studios | Redwood City, CA

“Use ingenuity and originality to advance step by step.
There can be no progress without originality.”

- Hidetaka Yoshikawa Chairman &
CEO of Takara Belmont



**ROLLER BALL
F MULTI-
PROCESSOR**
RB-42S

A sophisticated, restyled successor to the original, the Rollerball F brings new possibilities in hair design. Speed, power, and a rotating ring help color and chemical treatments penetrate deeper and faster delivering enhanced results that last. Now boasting a slim, elegant profile and variety of colors.



NAGI STYLING CHAIR
ST-M70

The Nagi, meaning “no wave” in Japanese has been designed with exceptional comfort in mind. By employing advanced ergonomic principles to the design process, the Nagi allows clients to sit with minimal pressure on the lower body and lumbar region; due to the placement of specialized foams in the seat cushion.



NAMI STYLING CHAIR
ST-M60

The Nami, meaning “wave” in Japanese has been designed with quality and comfort in mind. The Nami allows clients to rest in a truly ergonomic position by employing advanced ergonomic principles of the Nagi-Nami series. With the added value of an adjustable hydraulic base, client and stylist are equally comfortable.





OPULENT DAY SPA | Bakersfield, CA



“Design is a constant challenge to balance comfort with luxe, the practical with the desirable.”

- Donna Karan



SARA STYLING CHAIR ST-790

Seen in award-winning salons designs, the Sara styling chair brings comfort and a sense of style to the table. Ergonomic curves in both the backrest and seat enhances the comfort level for your clients. With elegant aluminum armrests, paired with a floating backrest that serves a dual purpose in both form and function, this easy-to-clean chair is a must have for your salon.



GENESIS BY SALON 124 | Buford, GA



**SARA SHAMPOO UNIT
SH-495**

A top seller, the Sara shampoo unit leaves a small footprint with a big impact. It features an adjustable basin that is designed with both client and shampoo technician in mind. The shampoo unit is available in a variety of body colors, vinyl options and either a white or black bowl.



**D WAGON TYPE A2
TYPE A2W**

The Type A2W D Wagon from the Kita Series is constructed from a highly durable aluminum material. With a sleek style and a timeless appeal, the wagon features a brushed metal finish along with a matching lower basket to hold an assortment of tools. Smoky-grey plastic trays, smooth gliding casters, and a distinct wooden handle makes this impeccable accessory a true statement piece for your space.



**STACKS N WAGON
SR-STSKN**

The pursuit of a tidy space has never been so easy with the Stacks N Wagon. A chrome finish, two stainless steel foldable trays, detachable walking handle and four black double casters, brings style, versatility and mobility to the accessory arena.



KOJI TOYODA SALON | West Hollywood, CA



AIR WAVE

AK-AWV-SL12NE - Silver

Hair will feel softer, retain its luster and improve in volume with the Air Wave Vita processor. It provides a new method by breaking SS bonding and repairing it to work better with natural elements of the hair structure; visibly changing the shape to a healthy wave. Alternate color and product options available.



FACET STYLING CHAIR ST-N20

The Facet Styling Chair adds a sleek outline to the sofa style chair. Designed in the image of a flower petal, the Facet Chair will lure your clients in and lull them into relaxation with its ultra-plush cushioning and supportive ergonomic design.



EMERALD STYLING CHAIR ST-N10

Mixing a modern style with the comfort of your living room armchair, the Emerald Styling Chair is a great choice for your salon. Designed through the use of ergonomic technology, the Emerald will wow your clients with its comfort and support.



DRY ART BLOW DRY BAR & SALON | Lexington, KY

“Creativity is the power to connect the seemingly unconnected.”

- William Plomer



CURVED-ART STYLING CHAIR ST-M40

The delicate and strong character of the Curved-Art Styling Chair comes out loud and clear with vivacious and sensual curves of this Italian-designed masterpiece. Certified by the Forest Stewardship Council (FSC) as “100 percent made from well-managed forests,” the Curved-Art brings both a sense of refined style and environment-conscious responsibility to salons and spas.





SALON BISOUX | Alexandria, VA

G90 SERIES



COVE STYLING CHAIR ST-N40

Contoured, spherical design and a unique “tuck” design feature creates a striking image from both front and back. A rounded back, with its slow, inside curve, wraps around the customer, creating a feeling of comfort and security.



KNOLL STYLING CHAIR ST-N50

Comfort with a sophisticated look, the Knoll offers the ergonomics of a sofa, even for customers of larger build. With a sturdy seat and comfortable armrests. The chair is designed as a single-bodied seat and back with side-mounted armrests. The spherical design provides comfort that envelops the customer.



CAPE STYLING CHAIR ST-N60

The unusual, divided-chair back of the Cove offers surprising back support and provides firm support for both the upper and lower back. With a distinguished look, the Cove offers both comfort and maneuverability for modern salon spaces.





SALON SPA W | Des Moines, IA

“Simplicity is the ultimate sophistication.”

- Leonardo Da Vinci



PRIME STYLING CHAIR

ST-N80

The Prime features a stunning design, superior comfort and all around quality. A tapered seat cushion provides leg pressure relief and allows clients to fully relax their bodies. Coupled with a spaced back and open arms, it makes clean-up between sessions a breeze.



PRIME SHAMPOO UNIT

SH-610

Rivalling its styling counterpart in comfort, design, and quality, the Prime shampoo unit brings a balance of comfort and ease of use. The unit features a gel neck rest, a tilting bowl, and an ultra-deep basin for improved access to the client's nape — a key comfort spot.



ELITE SHAMPOO UNIT

SH-620

Vivacious curves, definitive character and a sleek style – the Elite shampoo unit redefines luxury. It features a full-body design coupled with an ultra-deep bowl and gel neck rest to lull clients into a relaxing shampoo service experience. The unit is available in black or white shuttle colors with a large availability of customized upholstery options to match your style.



SOTO - SALON ON THE OHIO | Cincinnati, OH



**LUXIS SHAMPOO UNIT
SH-630**

Combining style with comfort, the Luxis Shampoo Unit is easy on the eyes and offers an added gel neck rest for clients to fully enjoy the experience. The space minded, ultra-deep bowl offers a 12° downward tilt and a 8° upward tilt to accommodate a range of clients.



**LUXIS STYLING CHAIR
ST-N90**

The Luxis offers the best of both worlds – comfort and functionality – wrapping clients in four panels of luxury and features a semi-open back and sides for easy cleaning. Aesthetically sound, the distinctive soft edged shape of the Luxis is key to timeless style.



**SPA MIST II PROCESSOR
SD-160**

Vibrant colors, lasting curls, and stronger wave length – the Spa Mist II enhances salon treatments by generating a fine mist of microscopic water particles. It gently opens up the hair's cuticle layer for deep conditioning of the hair, scalp and allows for an added hand spa treatment.



TRENDZ SALON | Palo Alto, CA

“Great quality is related to great design; you rarely get one without the other.”

- Giorgio Armani



YUME SHAMPOO UNIT SH-YML

Turn your shampoo service area into a multi-functional space with the Yume Shampoo Unit and create new income possibilities for your salon. With the adjustable height of the shampoo unit, your technician can stand and shampoo or remain seated to perform extended spa sessions and hair treatments. Your customer can relax in a lounge-like chair while their head is supported ergonomically and comfortably with the adjustable dual-axis gel head cushions that reduce pressure on the neck. The extra-wide shampoo basin also provides the flexibility for an array of different service options.





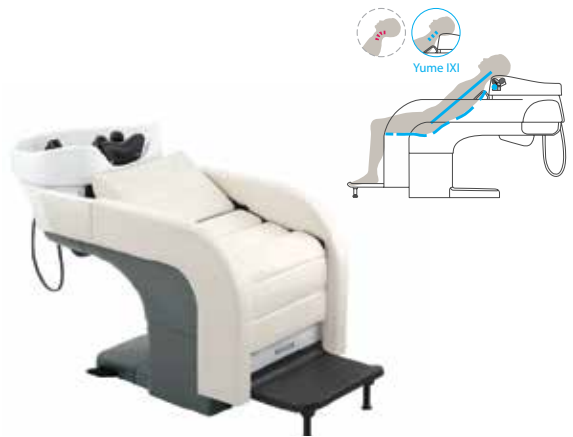
LAVENDER SALON BOUTIQUE & BLOWDRY BAR | Newport Beach, CA



YUME STOOL

MS-YMS

Take shampoo services to the next level with an operator-conscious seating solution – the Yume Stool. Ergonomically designed to reduce strain placed on high-pressure areas, the stool is the key to a consistently comfortable experience; and it's also equipped with an air-assisted height adjustment, tilt-able seat, fixed base, and flexible stem system for optimal operator comfort.



YUME IXI SHAMPOO UNIT

SH-YMIX/YMIXL

Now customers can experience the first-class comfort of lying back in a chair that gently envelops the body. The Yume IXI also features a space-saving footprint that ensures an easy fit in salons of all sizes and a stylist-friendly design that facilitates the shampoo process. The result is a new concept in shampoo service that will delight customers and salons alike.



GINGER BAY SALON & SPA | Town & Country, MO



**LIONESS STYLING CHAIR
ST-N30**

Make a powerful statement with a styling chair that carries a refined balance of modern style, a sense of sophistication, and a punch of comfort. With striking chrome arms, plush cushions and ergonomic curves in both the seat and back, the Lioness chair is prime performer in style and comfort.



**BAHAMA SHAMPOO UNIT
SH-506**

The Bahama adds a sleek and chic look to salon designs. With a stainless steel base, polished chrome arms and a euro-inspired style, it is designed to impress. Ergonomic features including a tilting ceramic bowl, extendable footrest and luxurious foam cushions makes it a favorite for client comfort.



**OREGON SHAMPOO UNIT
SH-510**

Bring a unique lounge-style comfort to your space with the Oregon. A removable full length cushion adds extra padding to the chair and allows for easy cleaning maintenance. With an adjustable tilting basin and an extendable leg rest, clients can enjoy a relaxing service in complete bliss.



W SALON & SPA | Coral Springs, FL



LIBRA STYLING CHAIR

ST-710

Timeless style with a modern-classical beauty, the competitively priced Libra Styling Chair will last well into the future. It features a wide, arched ergonomic back panel for added comfort and symmetrical armrests that maintain the open concept of the chair for easy clean-up between sessions.



ASISTA TRAY II

SR-AS21LD

The Asista Tray II attaches to a variety of Takara Belmont styling chairs and provides a complete swivel from left to right. Made from high-corrosion-resistant stainless steel, the add-on is excellent for working with hot tools and cosmetics. It is available with or without a dryer holder, which can be attached to the left or right side of the tray, for easy convenience.

“Style is a way to say who you are without having to speak.”

- Rachel Zoe





OTIS & FINN BARBERSHOP | Long Island, NY



ELEGANCE CLASSIC
BB-225 HR



ELEGANCE ELITE BLACK
BB-225B HR



ELEGANCE ELITE WHITE
BB-225W HR

225 SERIES BARBER CHAIRS

Nothing says “main street barber” like a barber chair from the Elegance 225 Series. The original Elegance was released in 1961 and remains a leading workhorse in shops around the world. With a subtle remodel in 2000, the 225 cut no corners and promises decades of service to a contemporary generation of fine men’s grooming. Using the same S-shaped wave spring system as luxury sofas, the series combines contoured upholstery, supportive urethane cushions and high gauge springs for just the right amount of support and durability. The seat comfort is clear to the eye and the impeccable proportions of the Elegance have attracted many to mimic — but it’s only Takara Belmont who makes The Real Thing.





HOUNDS BARBERSHOP | Sudbury, MA



KOKEN LEGACY CHAIR

BB-0090

Turn heads with the clean lines and shiny chrome of a classic. Look to the past with an eye toward the future with the durability and design of the Koken Legacy Barber Chair. Made in Japan, the Legacy offers features that will make a barber or stylist's job easier while offering supreme comfort to every client.



LANCER CHAIR

BB-HPPN / HPBN / HPEN

Set new service standards with the Lancer barber chair's robust body style, sophisticated design, superior comfort, and emphasis on operator efficiency. From an enhanced vertical-lift pump and synchronous recline system to an ergonomically engineered seat and elegant piping option, the barber chair is fine-tuned to take daily services to the next level. With refined operability and class-leading performance the Lancer paves the way towards a new future in barber technology. Available in Entry, Basic and Prime model types.





JIMMY ROD'S BARBERSHOP | Brisbane City, AU



CLIPPER

BB-CLPLB008S

This chair brings fresh air to the barber industry, with its traditional, nostalgic, and modern design. The motorbike inspired design creates a dignified and wide impression. The Clipper has a wider seat, longer backrest and longer leg approach. Available with different options.



SPORTSMAN

BB-141

Uniquely styled, arrestingly fit and intently versatile team player. The Sportsman will make you feel right at home with its unique look. Resembling a familiar sport car seat the Sportsman will make your customers feel comfortable for short and long term services.



DAINTY

BB-405

Strikingly attractive, purposefully versatile long-term partner. The Dainty is a rigid yet comfortable barber chair that still keeps the classic look. Available with different base options to best fit your need.



CUT HAIRDRESSING | San Diego, CA

“Truly elegant design incorporates top-notch functionality into a simple, uncluttered form.”

- David Lewis



ODIN SHAMPOO UNIT

BW-E16 + SH-640

Designed for comfort and stability, this Shampoo Unit offers roomy seating with a gently contoured cushion. The curved backrest softly cradles the body, and a shallow depression in the surface of the seat helps keep the body from sliding.



ODIN STYLING CHAIR

ST-E10

Stylish lines with four inches of foam in the seat and a comfortable nineteen and a half inches of width. The look of aluminum arms with the comfort of a black arm cap in the new Odin exemplifies a luxury look with a moderate price.





BLOOM SALON | Morristown, NJ



CARUSO STYLING CHAIR
ST-M80

Superior comfort and stunning design makes the Caruso chair a perennial favorite. With smooth edges, sensual curves, extra thick foam cushions, and a firm lateral support, the styling chair features an ergonomic aesthetic that keeps both client and stylist in mind.



GHIA STYLING CHAIR
ST-022

As a retro-inspired, sleek, and chic chair, the Ghia has sustained the market for over a decade. Its longstanding history of durability and performance proves it to be an honoree among styling chairs. With a well-balanced design of chrome and robust upholstery, this vintage chair brings about a sense of refinement.



BOSSA NOVA STYLING CHAIR
BMST-100

To do something with “Bossa” is to do it with charm and natural flair. With simple, clean lines and a geometric-inspired look, the Bossa Nova is modern classic that makes a fashionable statement in styling chair design.

AMERICANA

— Made Just For You

So your customers
can relax in quality
and comfort...

AMERICANA chairs were
created from a design of urban
sophistication and comfort
that is natural, wide, and open.

Available in multiple models
to complement various salon
styles, these chairs all feature
wide seats that let customers
sit in luxury.

AMERICANA — for a styling
experience that relaxes and
satisfies.



VIRTUS STYLING

ST-U10

With a distinguished square style, chic color combinations, and a stately presence, the Virtus line is an ideal match for male grooming salons and unisex salons alike. It features an ultra-comfortable seat structure, ergonomically refined design, and a 21.5" arm-to-arm seat width for maximum service comfort. The solidly built seat is available in two-tone or monotone color variations to accommodate a wider range of design concepts.



BELLUS STYLING

ST-U30

The Bellus line brings an air of refinement to salons or spas through a seating solution that truly shines. Gentle contours, a plush seat, and a sweetheart design add an opulent look and feel to each chair and unit. It features a 21.5" arm-to-arm seat width, ultra-plush cushions, and monotone color selections. Clients will appreciate the stunning style and exceptional comfort of the Bellus line as they enjoy a relaxing, bliss-filled service experience.



NOVO STYLING

ST-U20

Novo chairs and units carry a modern appeal with a sophisticated and exquisite sense of style. Vivacious curves and an expansive 22.0" seating width cradle clients in comfort, while luxurious foam padding and a lavish balance of graduated support enhances a service experience. The open-concept design adds a light and airy look, and it also makes cleanups between services a breeze.



**VIRTUS BACKWASH
BW-U16 + SH-640**

Standard options include a tilting bowl with a 13° downward tilt and a 7° upward tilt, and a #550 chrome fixture and faucet.



**VIRTUS ALL-PURPOSE
AP-U11**

Standard options include a B1A base, plastic backrest cover, and a reclining mechanism.



**VIRTUS DRYER
DY-U12 + HD-195**

Standard options include a plastic backrest cover, with an optional HD-195 Gemini Dryer add-on.



**VIRTUS RECEPTION
RC-U14**

Standard options include a plastic backrest cover and a 5-star plastic base, with optional caster add-on for enhanced mobility.



**BELLUS BACKWASH
BW-U36 + SH-640**

Standard options include a tilting bowl with a 13° downward tilt and a 7° upward tilt, and a #550 chrome fixture and faucet.



**BELLUS ALL-PURPOSE
AP-U31**

Standard options include a B1A base, plastic backrest cover, and a reclining mechanism.



**BELLUS DRYER
DY-U32 + HD-195**

Standard options include a plastic backrest cover, with an optional HD-195 Gemini Dryer add-on.



**BELLUS RECEPTION
RC-U34**

Standard options include a plastic backrest cover and a 5-star plastic base, with optional caster add-on for enhanced mobility.



**NOVO BACKWASH
BW-U26 + SH-640**

Standard options include a tilting bowl with a 13° downward tilt and a 7° upward tilt, and a #550 chrome fixture and faucet.



**NOVO ALL-PURPOSE
AP-U21**

Standard options include a B1A base, plastic backrest cover, and a reclining mechanism.



**NOVO DRYER
DY-U22 + HD-195**

Standard options include a plastic backrest cover, with an optional HD-195 Gemini Dryer add-on.



**NOVO RECEPTION
RC-U24**

Standard options include a plastic backrest cover and a 5-star plastic base, with optional caster add-on for enhanced mobility.



SINE QUA WEST SALON | Chicago, IL

GEMINI HD-195

The Gemini II Hair Dryer by Takara Belmont is an original proven design. With reliable and smooth operation, the dryer boasts many features including a safety hood stabilizer, 3-position heat control, gray smoke jumbo hood, ample heat for heat-activated permanent waves, easy access washable filter, 3-position hood adjustment, single set timer, automatic two-minute cooling period, unobstructed air intake filtration and is pre-configured for Takara Belmont equipment.



ACCESSORY CART RT-154

Outfit your Gemini II Dryer for mobility with wheels and a handle.



BELMASTER BM-97S BM-97A

This multi-function hair processor is easy, versatile and convenient. With just the touch of a button, improve coloring, bleaching, perming or highlighting processes and control damage. Beautiful results are achieved every time through the innovative use of moist steam heat.



Available as wall-mounted, BM-97A.

MICROMIST SD-200NIW

The Micro Mist treats damaged hair more effectively than other steamers by using ultrasonic vibrations to emit an enormous quantity of microscopic water particles that permeate deep into hair follicles. This creates a sensation for the customer that is often referred to as smooth and relaxing, while at the same time provides effective treatment for hair that is damaged by perms and coloring.



ARGENTO CS-050

Argento Cutting Stool with aluminum finish only, air assisted height adjustment on silver 5-star base and dark casters. Product Color: Silver.





A-SERIES EXST-A10

The A-Series Salon Chair comes with a chrome tubular footrest and injection molded armrests.



B-SERIES EXST-B10

With hydraulic base, chrome tubular footrest, injection molded black armrests and upholstered cushions, this chair is both stylish and comfortable.



DECORA ST-070

The Decora chair is one of the most durable chairs in our line that features removable upholstery. Upgrade the rubber arm to light or dark wood options.



PLANET ST-160

One of our best selling models, the Planet is roomier than most chairs. Its luxurious cushions and wide range of options make it a perennial favorite.



TAURUS SERIES

ST-A30 / ST-A40 / ST-A50

Welded tubular steel and soft removable seat cushion make the Taurus robust and easy to clean. Upholstered caps on chrome, black rubber or wood arms available. Shown with optional footrest.



PRISM ST-060

Strong and unique, the Prism Styling Chair features horizontal stitching detail and rubber arms.



SCORPIO ST-A60

The Scorpio offers the durability, performance and style of a classic styling chair. It features rubber arms with distinctive stitching detail on the back and seat.



LIU ST-300 / 30D / 30A

The popular Liu Styling Chair has a seat that looks slim but feels generous, combining beauty with comfort. Choose medium or dark wood arms. Optional bright aluminum armrests also available.



CHENNESEN ST-591

The Chennesen chair has been the trusted choice of many of the world's top hairdressing schools and salons. Why not make it yours? A black or off-white shell complements your upholstery.



DUET ST-E20

The Duet Styling Chair by Takara Belmont makes a bold statement in chair design. With a pitch perfect harmony of durability, style and comfort, this little chair with a big voice offers a full cadence of notable features.



STRIP TEASE ST-M30

The Strip Tease chair has a sturdy aluminum structure and a removable, interchangeable vinyl cover. Change your chair's cover for easy clean-up, or switch up your seasonal colors.



RIALTO ST-N70

Simple, clean lines make the Rialto styling chair a fit for any new salon design. The elegant, yet daring style of the Rialto combines four panels of luxury with the traditional comforts of a Takara Belmont chair.



DINO PALMIERI SALON & SPA | Woodmere, OH

BASE SELECTIONS

Inspire new possibilities with a large selection of chair styles, upholstery color choices and base options to truly express the style of your salon, spa or barbershop. From robust motorized bases with legendary lift ranges to a wide selection of star or round-style bases, you can choose the right base to suit your needs.



B1A

24" D x 16" H
8" Lift
Standard Round-Base
Style, Hydraulic Lift, with
Bright Chrome Finish.



FCS

24" D x 16" H
8" Lift
Star-Base Style, Hydraulic
Lift, with Bright Chrome
Finish.



FMB

6.5" D x 12.5" H
6" Lift
Floor-mounted Base
Style, Hydraulic Lift, with
Bright Chrome Finish.



Y6C

24" D x 16" H
Y6C - 8" Lift
Star-Base Style, Hydraulic
Lift, with Bright Chrome
Finish.



Y6L

24" D x 16" H
Y6L - 6" Lift
Star-Base Style, Hydraulic
Lift, with Bright Chrome
Finish.



B5C

24" D x 16" H
7" Lift
Round-Base Style,
Hydraulic Lift, with
Brushed Chrome Finish.



Classic E

22.8" D x 16.1" H
8" Stroke
Heavy-duty 1500W
electric base with a silver,
black or white pump cover.

Black



BS-BCEB

White



BS-BCEW

Silver



BS-BCES

T7B

13" Lift
Compact Hilox
Motorized Hydraulic
Base in Black.



Rated: 115V AC, 60Hz,
360W (approx. 3.31A)

Note: All dimensions, weights, and specifications are approximations and may vary. Specifications are subject to change without prior notice.



THE CANYON SALON | Westlake Village, CA

FOOTREST VARIATIONS

Mix and match your favorite footrest style with a compatible chair top selection, base option, upholstery color and more! Shop styles from brushed metal or polished chrome finishes to achieve the right style to fit the needs of your clients and your salon.

“Design is a plan for arranging elements in such a way as best to accomplish a particular purpose.”

- Charles Eames



EURO
Polished Chrome Finish, T-Shaped Style, Rubber Footrest Platform with Raised Features.



KITA
Brushed Aluminum Finish, T-Shaped Style, Brushed Metal Platform with Raised Features.



217
Polished Chrome Finish, U-Shaped Style, with a Linear Design.



SOFA
Polished Chrome Finish, U-Shaped Style, Brushed Metal Footrest Platform with Added Support Features.



PRIME/G90
Polished Aluminum Finish, T-Shaped Style, Dual-channel Platform with Takara Logo Features.



317
Polished Chrome Finish, U-Shaped Style, with a Curved Design.

Note: All footrest styles shown above are available for styling chairs only and compatibility may vary between chair top selections.

STATIONS, RETAIL AND CABINETRY



ILLUMINATION SERIES I-4000M / I-4010
Fluorescent back-lit mirror has a white acrylic light diffuser framed in laminate. A very modern yet classy look for your salon. Pair the mirror with the matching LED illuminated styling station, and your customers will be left with a lasting impression.



KUBIX SERIES K-4020M / K-4030 / K4320
Wall hung, panel-mounted mirror and laminated, split level wall hung styling station with integrated tool holder and quad outlet makes up a sophisticated and customizable station set.



SL-280 MIRROR SL-280
24" x 60" wall mirror shown, pairs well with the SL-210 wall-mounted styling station. Shown in Grey Polaris. No accent color.



SL-280B DOUBLE MIRROR SL-280B
Coordinating back-to-back 24" x 60" mirror with panels, similar to the SL-280. Shown with (2) Styling SL- 200 stations and in a Kensington Maple color. No accent color.



SL-200 STATION SL-200
Styling station with 3 drawers and 1 tilt-down tool holder (containing blower holder, two 2" diameter iron holders, and two 1.5" diameter iron holders), and one 4-plex electrical outlet.



SL-210 WALL STATION SL-210
Wall mounted styling station with French Cleat and includes two drawers, and one tilt-down tool holder (containing blower holder, two 2" diameter iron holders, and two 1.5" diameter iron holders), and one 4-plex electrical outlet.



SL-810 RETAIL DISPLAY SL-810
Retail display - wall secured for added strength and includes 5 adjustable shelves. Optional main or accent thermafused panel colors and drawer/door pull. Shown in Amber Cherry with Black accent color.



METRO SERIES T-4060M / T-4070
Choose the Metro Mirror and mix it with the Metro Styling Station to get a well-balanced blend of classic style and modern appeal.



PEDESTAL SERIES P-4050M / P-4040
Fluorescent back-lit, wall hung mirror along with frosted glass border, and an optional stainless steel column base. Choose from floor mounted or back-to-back configurations.



SL-410 MANICURE TABLE SL-410
Manicure table includes drawer, black arm pad, work light with edge clamp with casters for mobility. Shown with Rollabout Storage Cabinet SL-140M.



SL-140 DESK OR MANICURE TABLE CART SL-140
Rollabout storage cabinet with 2 drawers, 1 file drawer and casters for mobility. Optional main or accent thermafused panel colors and drawer/door pull. Shown with a SL-110 reception desk.



SL-742 / 748 BACKWASH SHAMPOO STORAGE SL-742 / SL-748
Backwash shampoo storage includes 3-door upper storage with adjustable shelves, and lower tilt-down towel hampers, and center storage with adjustable shelf.



SL-642 / 648 WALL-MOUNTED BOWL BACK BAR SL-642 / 648
Shampoo Station with a 3-door upper storage area, with adjustable shelves, and lower tilt-down towel hamper. Will accommodate all Marble Products wall hung bowls (bowl not included).



SL-300 ROLL-ABOUT STATION SL-300
Roll-about station includes two drawers, one tilt-down tool holder (containing blower holder, two 2" diameter iron holders) and a 15 AMP power strip, four casters, two of which are locking.

GYPSY

Both durable and budget friendly, this high-grade commercial shampoo bowl is crafted from a durable ABS Acrylic material. Classic styling and geometric design maximizes operating space for quick and efficient services.



MODEL 30

Lightweight, strong, and stylish -- the Model 30 bowl features a trendy heart-shaped design that is constructed from reinforced fiberglass. Available in High Density Polyethylene (HDPE) version to bring quality at an affordable value.



MODEL 200

The Model 200 is a proven favorite with its attractive styling, durability, and performance. It features an extra wide work area and a "comfort plus" neck rest design. Available in pedestal-mounted version.



MODEL 1000

Elegant, versatile and functional – the Model 1000 bowl features a cubic waterfall design to allow water to glide into the wide shampoo basin, reducing water splash back. Available in wall, bottom, or cabinet mounted versions.



MODEL 2001

Bring the convenience of a pedestal-mounted shampoo bowl with a 14" x 20" internal workspace to your salon! Featuring a 30.75" overall height, the extra large Model 2001 is ready to help you achieve big results.



MODEL 4000

The Model 4000 bowl has the depth for extra long hair, unequalled comfort for both customer and operator, European styling, and practical American application. Available in both backwash and wall-mounted versions.



LIBERTY SH-500

The Liberty Shampoo Unit brings more than reliable construction and elegant design. Choose from over 20 bowl and base colors, and tons of vinyl options. Have the freedom to choose so you can be you! Made in the USA.



Coordinate the Liberty Shampoo Unit with a ST-710 Libra Styling Chair.

MODEL 10

The lightweight, durable bowl features a classic geometric shape, and it's the same size as the popular Model 100 bowl. The Model 10 wall-mountable bowl is crafted from reinforced fiberglass for both quality and value.



MODEL 100

Popular for its all around efficiency and comfort, the Model 100 bowl is constructed from cultured marble. It is engineered with smoothed edges to provide clients with a comfortable resting point for reduced pressure.



MODEL 300

Featuring an extra wide work area, a "comfort plus" neck rest design, and a matching look and feel as the Model 200, the Model 300 provides a coordinating 23.50" pedestal to bring your shampoo service to new heights.



MODEL 2000

Touted as one of the largest cultured marble bowls on the market, the Model 2000 bowl is designed to make shampooing a pleasure for both the customer and operator. Available in pedestal-mounted version.



MODEL 3000

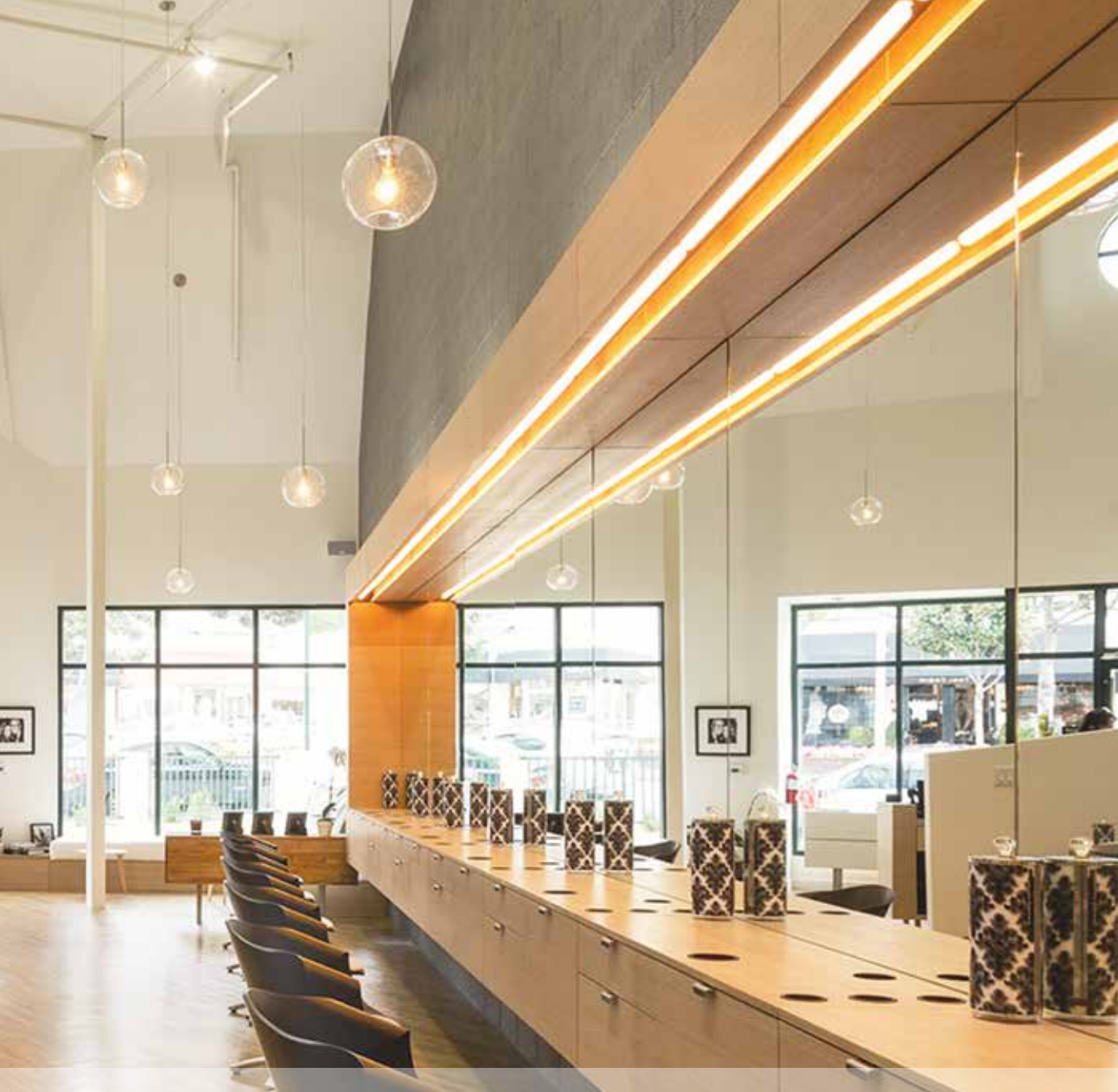
Available in both backwash and wall-mounted versions, the Model 3000 bowl merges European styling with absolute comfort. The modern appeal of the bowl is only rivaled by its comfortable design and functionality.



MODEL 5000

With subtle lines and a distinct style, the Model 5000 adds a hint of character to set itself apart from the ordinary. It's a proven favorite as a Liberty Backwash shampoo bowl and it's available in bottom-mounted versions.





Set Yourself Apart from the Rest

101 Belmont Drive, Somerset, NJ 08873



REV20161221

Note: All dimensions, weights, and specifications are approximations and may vary. Specifications are subject to change without prior notice.

Eden by Eden Sassoon | West Hollywood, CA (shown on cover pages).