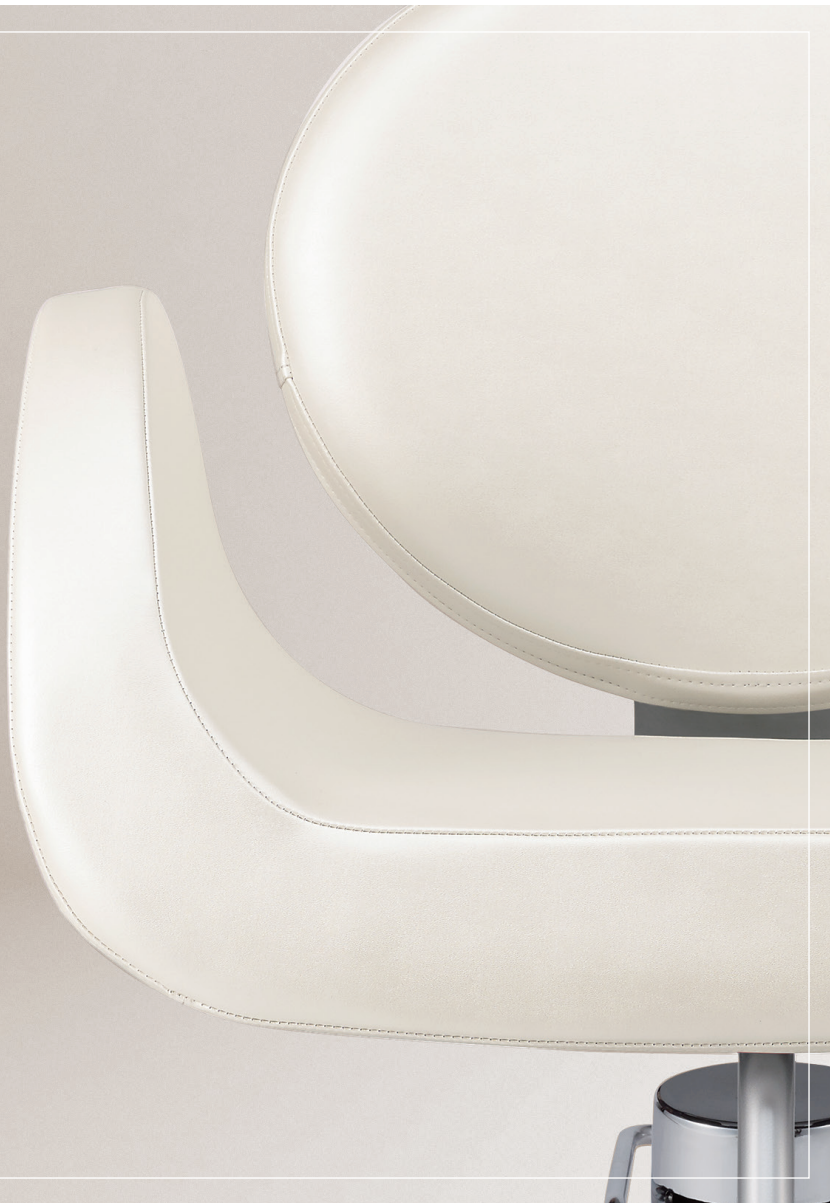


UNRIVALED
QUALITY &
COMFORT









Hidetaka Yoshikawa

Chairman & CEO

Our mission is to help people fulfill their wish to remain beautiful and healthy by providing superior products and services.

It's the common pursuit of beauty and health that unites people of all countries, generations and eras. While we have provided products and services to the world for countless years, the role we all share continues to be a steadfast reminder of the love and responsibility that first sparked our passion.

We strive for innovation and improvement. The shifting-tides of digitalization and globalization drew waves of change: change in the way we live, change in corporate management, and change in society. With this change, we expect society to look towards our industry for answers to growing needs in the beauty and health fields.

With an eye towards the future, we continue to advance in all areas by maximizing the potential of technology, expanding our capabilities and creating value for our customers through new products and enhanced services. The tremendous value placed on our customers is unwavering and remains as both a priority and tribute to our success.

With a diverse culture of resources, we embark on a journey to improve ourselves – and the world – for years to come.

A handwritten signature in black ink, reading "Hidetaka Yoshikawa". The signature is stylized and fluid, with a long horizontal stroke at the end.



CRAFTSMANSHIP

Over a century of leading the industry in cutting edge technology and design with hand-crafted quality production. Simply stated, it's all about the time – the time invested with sourcing superior quality materials, the time we have devoted to our Takara Belmont 16-point quality inspection, and the time we have added for hand-crafted quality production. As advanced traditionalists, our products have been refined by generations of experience and an ever-lasting commitment to our customers and the health and beauty industries.

Our fine-tuned process provides our customers with the next-level products and services you've come to expect from Takara Belmont. It's our ahead-of-the-curve philosophy that drives all of the production advancements including laser-guided upholstery cutting that decreases material fraying while increasing product longevity, 960° thermo press technology to ensure long-lasting impressions and carefully calibrated pneumatic tools to pinpoint accuracy from the bolts up.





US HEADQUARTERS
 101 Belmont Drive
 Somerset, NJ 08873
www.TakaraBelmont.com
 732.469.5000 | 800.526.3847

SHOWROOMS & OFFICES

Today, salon and spa customers are looking for more than just the basics. As a beauty professional, you want to provide them with the amenities that they have come to expect. Our sales and design team at Takara Belmont can help you create an environment that will attract customers and make your business successful.

Whether your project is large or small, we provide you with the assistance you need to create what you've always wanted. You can be confident that you're dealing with the industry's leader in innovation, quality, and breadth of options. You will know that everything you install in your salon is manufactured to last a lifetime.

NORTH EAST
northeast@takarabelmont.com

NEW JERSEY
 101 Belmont Drive
 Somerset, NJ 08873
 877.283.1289 | 732.283.1687

NEW YORK
 17 West 56th Street
 New York, NY 10019
 215.541.6660 | 212.315.4598

SOUTHEAST
 4166 Sinclair Street
 Denver, NC 28037
southeast@takarabelmont.com
 888.492.7292 | 704.995.7203

SOUTHWEST
 2015 Midway Road, Ste. 112
 Carrollton, TX 75006
southwest@takarabelmont.com
 800.478.6368 | 972.242.1985

MIDWEST
 1631 Dr. Martin Luther King Dr.
 St. Louis, MO 63106
midwest@takarabelmont.com
 800.325.7373 | 314.436.1039

PACIFIC WEST
 1350 Reynolds Ave., Ste. 122
 Irvine, CA 92614
pacificwest@takarabelmont.com
 949.916.3404 | 949.916.3414



KITA SERIES

The Kita Series is versatile, allowing for customers to sit longer for a variety of services, meaning greater menu expansion for salon owners.



NAMI STYLING CHAIR
ST-M60



NAGI STYLING CHAIR
ST-M70



AMERICANA SERIES

The Americana Series creates a cohesive aesthetic through a welcomed variety of seating styles. Featuring the Bellus, Novo and Virtus chairs Takara Belmont brings you classic modern appeal. Enjoy a step up from the competition with a sophisticated design and top-grade craftsmanship. Also available as a shampoo unit, dryer, all-purpose chair and reception chair.



VIRTUS CHAIR
ST-U10 / BW-U16 + SH-640



NOVO CHAIR
ST-U20 / BW-U26 + SH-640



BELLUS CHAIR
ST-U30 / BW-U36 + SH-640



G90 SERIES

The G90 Series is developed with a philosophy of integrating science, technology and design. Positioning Takara Belmont as the leading salon and spa furniture provider through the years.



COVE CHAIR
ST-N40



KNOLL CHAIR
ST-N50



JAPANESE DESIGN

Japanese design mixes modern style with comfort. A modern flair helps your salon make a statement while plush cushions provide optimal support for clients and easy access for stylists. These chairs will wow your clients with their comfort and support.



CHOCO CHAIR
ST-M90



HARP CHAIR
ST-M100



SHIKI CHAIR
ST-N100



RS3 SERIES

Superb design features to make the best shiatsu shampoo experience a reality. Conveniently shaped bowl with a comfortable neck cushion aligns with thermo-mixed warm water, and a hush-quiet drain adding up to a uniquely relaxing shiatsu shampoo. The high-tech neck cushion provides comfort for customers of all sizes. Uniquely relaxing for you and your client.



PRIME CHAIR
ST-N80 / SH-610

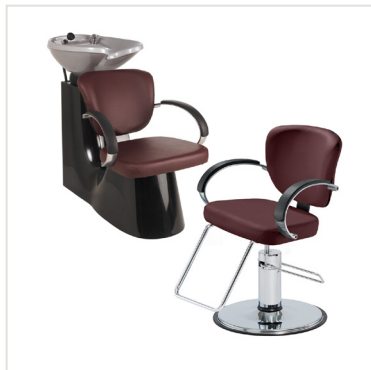


RS ELITE CHAIR
SH-620



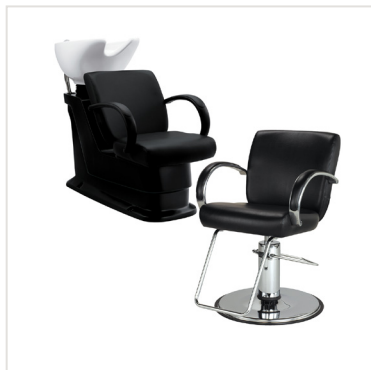
LUXIS CHAIR
ST-N90 / SH-630

LIBRA & ODIN



LIBRA CHAIR
ST-710 / LIBERTY - SH-500

The Libra features a wide seat and backrest for maximum comfort. Also available as a shampoo unit.



ODIN CHAIR
ST-E10 / BW-E16 + SH-640

One of our classic chairs with a sleek modern style. Also available as shampoo unit to match your salon.









ACCESSORIES



ASISTA TRAY II
SR-AS21LD



D-GALLEY WAGON TYPE S
SR-DGS



D-STOOL
SC-246C

PROCESSORS



ROLLER BALL-F
RB-47A / RB-42S

The Roller Ball F brings speed, power, and convenience in both wall-mount and mobile styles.



MICRO MIST
SD-200NIW

Using the power of water, the mist helps treatment particles permeate into damaged hair.



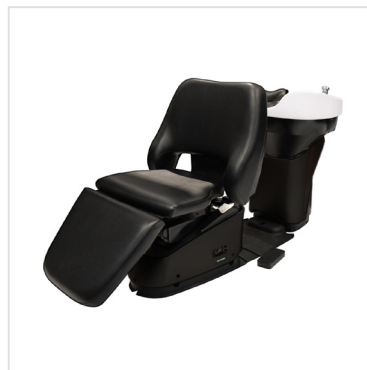


YUME EXPERIENCE

Turn your shampoo service area into a multi-functional space with the YUME Shampoo Unit and create new income possibilities for your salon. With the adjustable height of the shampoo unit, your technician can stand and shampoo or remain seated to perform extended spa sessions and hair treatments.



YUME
SH-YML



YUME ESPOIR
SH-YMESMBT11



YUME IXI
SH-YMIX / SH-YMIXL

ACCESSORIES



YUME ESPOIR STOOL
AY-Z009X

Take shampoo services to the next level with an operator-conscious seating solution – the Yume Espoir Stool.



SPA MIST II
SD-160

Vibrant colors, lasting curls, stronger wave length, head spa treatments – the Spa Mist II can do it all.





BACKWASH UNITS



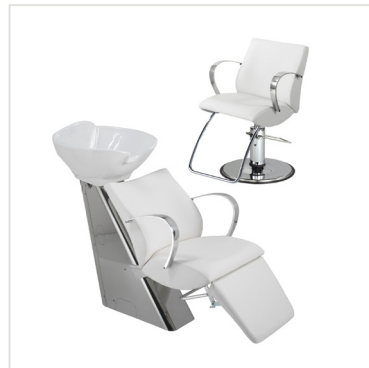
LUSO
BW-U46 + SH-645



TESSORO
BW-U56 + SH-645



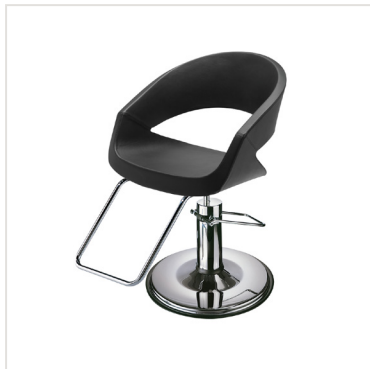
OREGON
SH-510



BAHAMA
SH-506 / LIONESS ST-N30



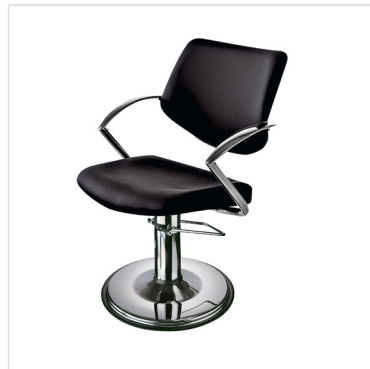
MEDITERRANEAN INSPIRED



CARUSO
ST-M80



BOSSA NOVA
BMST-100



SARA
ST-790



GHIA
ST-022



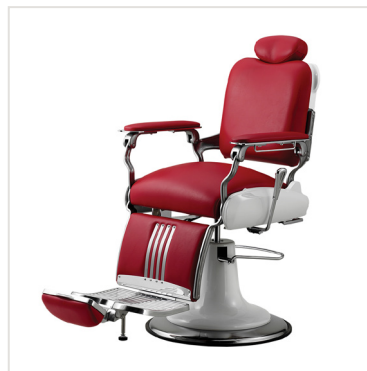


MEN'S GROOMING

The Legend Barber Chair sets new standards for barber chair technology with its robust body style, sophisticated design, superior comfort, and emphasis on operator efficiency. From an enhanced vertical-lift pump and synchronous recline system to an ergonomically engineered seat and elegant upholstery piping, the barber chair is fine-tuned to take daily services to the next level.



LEGEND
BB-LGFO



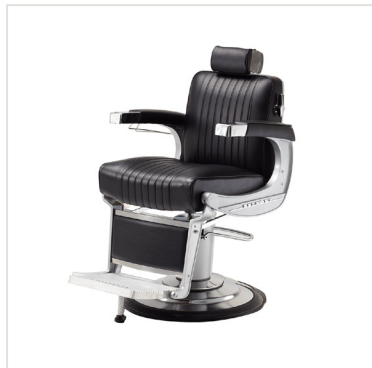
KOKEN LEGACY
BB-0090



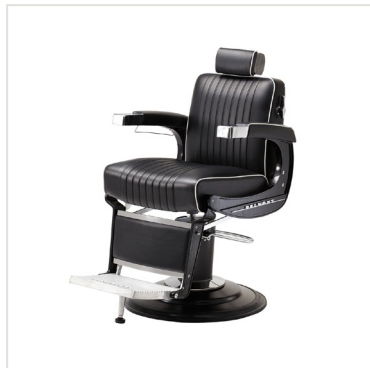
MAJOLICA CABINET*
MCC-1800RE



MEN'S GROOMING



225 CLASSIC
BB-225 HR



225 ELITE BLACK
BB-225B HR



225 ELITE WHITE
BB-225W HR



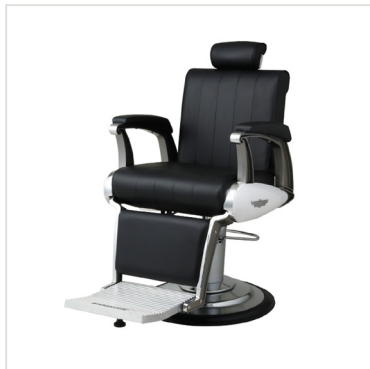
225 DIAMOND STITCH
BB-225DMD HR



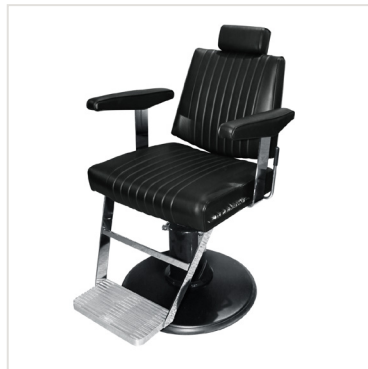
MEN'S GROOMING



HEELREST
Available for 225 and Clipper chairs



CLIPPER
BB-CLPLB008S



DAINTY
BB-405



SPORTSMAN
BB-141

FOOTREST OPTIONS



217 FOOTREST

Polished chrome finish, U-shaped style footrest with a straight linear design.



317 FOOTREST

Polished chrome finish, U-shaped style footrest with a slightly curved linear design.



EURO STYLE

Polished chrome finish, T-shaped style, footrest platform with Raised Features.



G90 FOOTREST

Polished aluminum finish, T-shaped style, dual-channel platform with the Takara logo features.



KITA FOOTREST

Brushed aluminum finish, T-shaped style, brushed metal platform with raised features.



KAZE STYLE

Floor step black molded rubber footrest

BASE OPTIONS



B1A BASE

Takara Belmont's standard and our best selling hydraulic base in bright chrome.



FCS BASE

The FCS base looks slight but is a durable choice in beautiful bright chrome.



B5C BASE

Heavy-duty B5C hydraulic base in brushed chrome.



FMB BASE

Clean-up is easy around the FMB floor-mounted hydraulic base, available in chrome.



Y6C-G BASE

To complete the polished look of your designer chairs, choose the chrome Y6C-G or its shorter version, the Y6L-G.



Y6L-G BASE

To complete the polished look of your designer chairs, choose the chrome Y6L-G or its taller version, the Y6C-G.



YAB-347L BASE

Choose the black YAB for a sleek modern look that will make a statement in your salon or shop.

BARBER CHAIR BASES



CLASSIC E BASE

Heavy-duty BS-BCE hydraulic base in brushed chrome. Available in white, silver or black.



K25 BASE

Heavy-duty BS-K25 hydraulic base in brushed chrome. Available in white, silver, or black.



SLIM 85 BASE

Heavy-duty BS-SL85 hydraulic base in brushed chrome. Available in white or black.



008 BASE

Heavy-duty BS-008 hydraulic base in brushed chrome.

RECOMMENDED FOR STYLING CHAIRS ONLY.



T7B

An electric base legendary for its durability and range of height,



CHDN

An electric base legendary for its durability and range of height,

