

Y U M E S P A  
*Dream Shampoo*





Elevating shampoo service to new heights,  
with an unforgettable sensory experience.

True beauty comes from within, when the soul is at peace.

With YUME SPA, your valued customers will experience  
a revolutionary shampoo treatment that unleashes their inner beauty.

Y U M E S P A  
*Dream Shampoo*

YUME SPA's full-flat chair and gentle mist combine to deliver a dream-like treatment experience that soothes the hair and scalp, and the soul.

A shampoo chair that's so relaxing, it's literally sleep-inducing.

An atmospheric mist enhances the treatment experience and infuses the hair and scalp with moisture.

A professionally customised shampooing technique combines pure comfort with tangible results.

YUME SPA ensures total care delivered through a unique treatment experience

that nurtures luxurious hair and a healthy scalp, while reaching the root of all beauty - the soul.





The unique **YUME SPA SYSTEM...**

...provides an enduring and unforgettable sensory experience



**SPA MIST II** microscopic mist processor

Ensures complete control over  
the mist temperature and volume

**YUME** shampoo chair

Invites your customers to experience  
the pinnacle of luxury and comfort

**YUME STOOL**

Affords hairstylists complete  
freedom of movement

# YUME SPA

There are three key elements of this new treatment experience

## EQUIPMENT

YUME SERIES + SPA MIST II

Specialised equipment that delivers complete care

## TECHNIQUE

An original and innovative treatment protocol that leverages the power of mist

## ENVIRONMENT

Creates a special sensory space for your customer to escape and indulge in pure relaxation

### YUME SPA brings many benefits to your salon, including...

#### Builds loyal customers

Attract new customers while maximising loyalty and profitability

#### Attract first-time customers

YUME SPA's unique treatment experience perfectly complements and adds value to your existing styling and colouring services. This encourages customers to try something new and experiential.

#### Repeat customers

Once experienced, first-time customers will want to return, and they'll tell others. This results in repeat custom and new customers.

#### Loyal customers

By building trust and nurturing relationships with your customers, their loyalty increases. Loyal customers are the most effective way to attract new business and create a 'success spiral'.

#### YUME SPA transforms your shampooing space into a 'sales creation' space by increasing the average customer spend

With the introduction of YUME SPA's menu of services, your shampooing space will generate profits like never before.

#### Boosts retail sales

The soothing and beautifying effects of YUME SPA combine to create more satisfied customers who are more likely to buy home hair care products offered in the salon.

#### Builds rapport

The sensory nature of the YUME SPA experience engenders trust and deepens communication between the hairstylist and their customer.

EQUIPMENT  
SPA MIST II

Specialised equipment  
that provides total care

A super-fine, warming mist envelops  
and permeates the hair and scalp to  
enhance the treatment performance  
and yield tangible results.  
This not only soothes the hair and scalp,  
but also the soul.





# Control the temperature and quantity of mist to ensure you provide the ultimate YUME SPA treatment

Spa Mist II was innovated to focus on the power of a super-fine mist and its benefits to the health and well-being of the hair and scalp. Delivered at appropriate temperatures, this mist has tremendous, and clinically proven, treatment potential. An ultrasonic transducer, vibrating at 1.6 million times per second, generates a mist of microscopic water particles. The temperature and quantity of the mist can be freely controlled, enabling treatments to better permeate the hair and intensify the effect of pure relaxation.



Note:  
Image shows Open Mist used with the Open Mist Ball Nozzle (optional).

● BROWN ● BLACK ○ WHITE  
DIMENSIONS:  
W295×D375×H750 to 1200mm (with hose upright)



## Point 1 Uniform heat for a consistent finish

Mist fills the treatment cap to open the cuticle layers with uniform warmth. This maximises the infusion of treatment particles that naturally permeate every strand of hair without dilution.

## Point 2 Cooling sustains the treatment result

A cooling function closes the cuticle layer to seal treatment ingredients into each hair strand. The mist heating and cooling functions work in synergy to deliver longer-lasting results.

## Point 3 Relaxation

Open Mist provides gentle low-temperature heating for complete customer comfort and a soothing, luxurious treatment experience.

### OPEN MIST

#### Warmth creates comfort

- Allows the hairstylist to deliver an extremely comfortable shampoo and scalp treatment more easily
- The mist and warmth combine to relax the customer



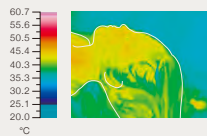
### HAIR CARE

#### Penetrates deep into hair for a longer-lasting effect

- Opens the cuticle layers allowing treatment particles to penetrate deep into the hair
- Cooling closes the cuticles to keep hair healthy

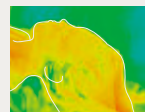


#### Hair temperature change (during shampoo)



##### Without Open Mist

- The hair gradually cools resulting not only in less lather, but colder lather
- The customer feels colder



##### With Open Mist

- More shampoo lather is generated, and the hairstylist's hands glide easily through the hair
- The customer experiences warmer, more comfortable sensations from face line to behind the ear

### SCALP CARE

#### Opens pores to clean the scalp

- Moisturising and heating opens the pores to free the scalp of keratotic plugs and debris
- With minimal stress on the scalp, keratotic plugs and debris are removed for a beautifully clean, clear and healthy scalp



#### State of the pores and scalp

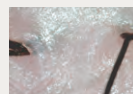


Before treatment  
Hardened sebum clogs pores



8 minutes of heating at 48°C

Mist heating  
Moisture spreads throughout the scalp, opening pores and liquefying sebum



After shampoo  
Debris is removed and the pores are open and clean

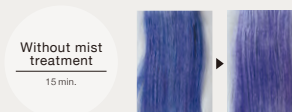
#### Level of penetration and durability

Data 1, 2, and 3 are based on tests where dyeing capacity and level of penetration are assessed using acid dye on bundles of grey human hair.

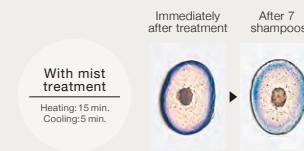
##### Data 1 Surface comparison (after applying dye)



Blue dye adheres well with minimal colour loss even after 7 shampoos.



##### Data 2 Cross section comparison (after applying dye)

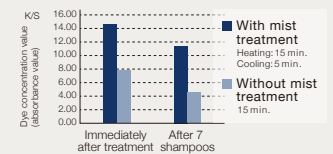


A large amount of blue dye has penetrated the hair with minimal colour loss even after 7 shampoos.



##### Data 3 Comparison of dyeing capacity and lasting strength

The hair bundle in Data 1 was measured with a spectrophotometer and a graph made using the K/S value. This is an equivalent of the dye concentration value (absorbance value).



Measuring the dye concentration by light absorption, a mist-treated hair bundle has a higher dyeing capacity and greater durability immediately after treatment. This effect is maintained even after seven shampoos compared to a hair bundle where the dye sets naturally.

\*Similar results were achieved with treatment agents.

EQUIPMENT  
YUME SERIES

Specialised equipment  
that provides total care

YUME SPA's sumptuous full-flat chair  
and innovative neck support transports your  
customer to a haven of luxury and tranquillity.

It makes them feel so relaxed they'll  
lose track of time.

F U L L  
F L A T



Whether upright or fully reclined, YUME SPA's full-flat chairs deliver a level of comfort so indulgent that your customer may never want to leave.



Adjustable leg rest\*

The angle of leg rest can be freely adjusted depending on customer's preference and the type of service being administered.

\*YUME DX



The hairstylist can adjust the chair height to  
suit every customer perfectly\*

With advanced motorisation seamlessly manoeuvring your customer into the perfect treatment position, the chair moves up and down and reclines effortlessly, without any jarring or starting/stopping. This ensures your customer remains totally relaxed and the ultimate ergonomic position is achieved for the stylist to deliver the treatment.

\*YUME and YUME DX

# SEAT



The seat's organic form combined with an ergonomic weight-dispersing cushioning system gently envelope the body to support your customer in complete comfort - even for long periods.

# STOOL



Note: Appearance of actual product may differ slightly from depiction.

## YUME SPA exclusive "YUME STOOL" (optional)

This innovative stool, designed especially to accompany the YUME SPA experience, tilts forwards and backwards, and from left to right. This manoeuvrability gives the user complete freedom of movement while seated, allowing them to perform the treatment perfectly every time. This is essential because the customer will only feel truly relaxed when the hairstylist is relaxed. An integrated gas cylinder also allows for perfect height adjustment.

# NECK DEVICE

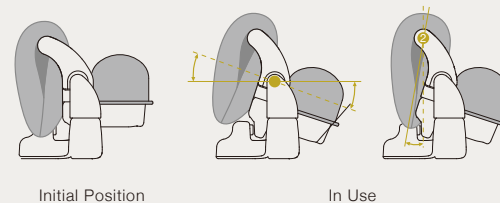


A soft neck cushion and two resilient head cushions offer three-point support to minimise neck strain. Your customers will feel like they're floating on air.

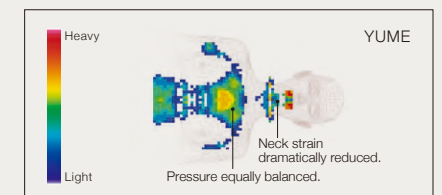
## How the neck device functions

First the neck device rotates on axis ①, then the cushion rotates on axis ② in accordance with the shape of the customer's head. This two-axis design adjusts to the contours of the head to ensure ultimate comfort.

[Side view of the neck device]



## Comparison of pressure distribution between YUME and MAJOLICA



## Integrated Shampoo Chair & Basin Units

### YUME DX

Total beauty model—  
for ultimate hospitality Electric

LUXURY YUME SPA MASSAGE	FACIAL CARE HAND & NAIL CARE
----------------------------	---------------------------------

**[ Basin unit ]**

- Backwash basin<sup>1</sup>
- Adjustable height
- Height of neck position: 610-950mm

**[ Chair ]**

- Extra-wide 90° rotatable seat
- Integrated and removable headrest
- Adjustable leg rest

SEAT COLOUR

- |                     |                |
|---------------------|----------------|
| ● IVORY [SH15]      | ● BROWN [NL12] |
| ● DARK BROWN [SH24] | ● BLACK [SH1]  |

DIMENSIONS: W760xD2000 (slide depth+170) x 990mm (without rotation)  
W1670xD1500xH990mm (with 90° rotation)  
Minimum space requirements: W2700xL3000mm (with 90° rotation)



### YUME

Luxury model—for a supremely  
relaxing spa experience Electric

YUME SPA	HAND & NAIL CARE
----------	------------------

**[ Basin unit ]**

- Backwash basin<sup>1</sup>
- Adjustable height
- Height of neck position: 600-950mm

**[ Chair ]**

- Extra-wide seat

SEAT COLOUR

- |                     |                |
|---------------------|----------------|
| ● IVORY [SH15]      | ● BROWN [NL12] |
| ● DARK BROWN [SH24] | ● BLACK [SH1]  |

DIMENSIONS: W760xD1965 (slide depth+170)x975mm



### YUME NOBLE

A completely flat model—ensures  
complete sublime relaxation Electric

YUME SPA HAND & NAIL CARE	MASSAGE
------------------------------	---------

**[ Basin unit ]**

- Backwash basin<sup>2</sup>
- Height of neck position: 800mm

**[ Chair ]**

- Adjustable leg rest<sup>5</sup>

SEAT COLOUR

- |                        |               |
|------------------------|---------------|
| ● URBAN BLACK [ED1HY4] | ● BLACK [ED1] |
| ● DARK BROWN [ED2]     |               |

UNIT COVER COLOUR

- |             |                   |
|-------------|-------------------|
| ● BLACK [B] | ● MATT BROWN [BR] |
|-------------|-------------------|

DIMENSIONS: W800xD1958xH925mm



### YUME SUITE

A completely flat model—  
the embodiment of pure luxury Electric

YUME SPA HAND & NAIL CARE	MASSAGE
------------------------------	---------

**[ Basin unit ]**

- Backwash basin<sup>2</sup>
- Height of neck position: 800mm

**[ Chair ]**

- Adjustable leg rest<sup>5</sup>

SEAT COLOUR

- |                      |                        |
|----------------------|------------------------|
| ● PERSIAN GREY [ST1] | ● ECRU BEIGE [ST2]     |
| ● SAXE BLUE [ST3]    | ● CINNAMON BROWN [ST4] |

UNIT COVER COLOUR

- |             |                   |
|-------------|-------------------|
| ● BLACK [B] | ● MATT BROWN [BR] |
|-------------|-------------------|

DIMENSIONS: W800xD1958xH925mm



<sup>1</sup>For seated or standing operation from rear <sup>2</sup>For seated operation from rear <sup>3</sup>HY upholstery is not available in Europe. <sup>4</sup>Selectable at purchase <sup>5</sup>Leg rest and backrest move simultaneously. <sup>6</sup>For standing operation from rear

## Mobile Wash Units—ensuring customers so stay relaxed

### YUME ESPOIR

Our most stylish and technically versatile model with two designs and an array of colours to choose from [Electric](#)

YUME SPA	MASSAGE
----------	---------

#### [ Basin unit ]

- Backwash basin<sup>2</sup>
- Height of neck position: 800mm

#### [ Chair ]

- Fixed or adjustable leg rest<sup>5</sup>

#### SEAT COLOUR (BASIC LINE)

- WHITE [NL1] ● DARK BROWN [NL24]
- BLACK [NL5]

#### SEAT COLOUR (PREMIUM LINE)

- IVORY [SH15] ● DARK BROWN [SH24]
- MOCHA BROWN [SH7] ● BLACK [SH1]

#### UNIT COVER COLOUR

- BLACK [B] ● LUXE SILVER [S]

DIMENSIONS: W650×D1958×H930mm  
(Backwash basin/Basic Line/Height H/Fixed leg rest)

#### BASIC LINE



#### PREMIUM LINE



### YUME 和 (Nagomi)

Space-efficient model—combining comfort with efficiency [Manual](#)

#### LIGHT YUME SPA

#### [ Basin unit ]

- Backwash basin<sup>1</sup>
- Height of neck position: For seated operation: 820mm [L]  
For standing operation: 900mm [H]<sup>4</sup>

#### [ Chair ]

- Slide-out footrest

#### SEAT COLOUR

- WHITE [GL1] ● BLACK [GL2] ● DARK BROWN [GL3]
- MOCHA BROWN [GL4]

DIMENSIONS: W660×D1860×H930mm (Height H)

Note: Chair does not fully recline.



### YUME SWING

A high-quality one-stop service that's perfect for private rooms [Manual](#)

YUME SPA	FACIAL CARE
MASSAGE	HAND & NAIL CARE
FOOT CARE	

#### [ Basin unit ]

- Backwash basin<sup>2</sup>
- Height of neck position: 800mm

DIMENSIONS: W1024×D1348×H850mm (Rear layout)  
Minimum space requirements: W2200×L3000mm

Note: Chair sold separately



Shampoo position



Note: Photo shows rear layout.

### YUME OASIS

Instantly transforms your styling area into a YUME SPA zone, for an innovative and space-efficient one-stop service. [Manual](#)

YUME SPA	FACIAL CARE
MASSAGE	HAND & NAIL CARE
FOOT CARE	

#### [ Basin unit ]

- Backwash basin<sup>6</sup>
- Height of neck position: Backwash unit: 900mm

#### UNIT COVER COLOUR

- WHITE [WH] ● BLACK [BK] ● DARK BROWN [DB]
- CHAMPAGNE GOLD [CG] ● DEEP NAVY [NV] ● RED [RD]

DIMENSIONS: W500×D596×H931mm

Note: Chair and floor unit sold separately



Shampoo position



#### Floor unit

Shampooing is possible when the basin unit is positioned above and connected to the floor unit.



DIMENSIONS: W447×D607×H135mm

### Stools

#### YUME STOOL

Stool tilts 360° allowing free movement.

DIMENSIONS: W415×D415×H485-672mm



#### ESPOIR STOOL

Stool tilts forward and back freely.

DIMENSIONS: W360×D390×H474-680mm



#### M-STOOL

Stool tilts forward and back, with carry handle and casters.

DIMENSIONS: W360×D443×H660-705mm



# TECHNIQUE

Original services  
that leverage  
the power of mist

Treat your customers to tried-and-tested techniques that relax the body and optimise the effect of mist on the hair and scalp.

## YUME SPA Original Services



### Cleansing

OPEN MIST

Unclogs pores that shampoo cannot leave the scalp feeling clean and refreshed.



### Mist Heating

OPEN MIST

A warm mist effectively removes sebum, as its warm wash stimulates circulation to promote scalp health and enhance relaxation.



### Shampooing

OPEN MIST

A warm mist and luxuriously rich shampoo lather deliver an unforgettable sensory experience.



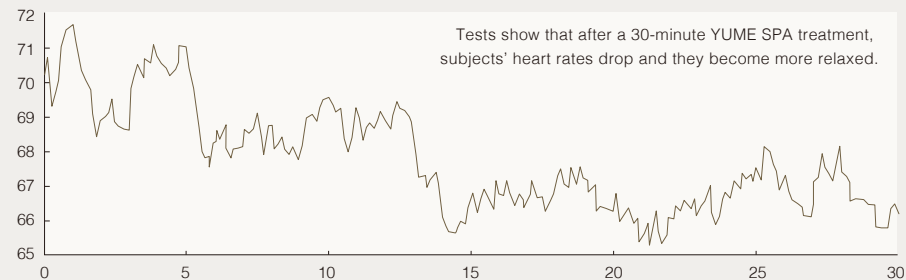
### Massage

OPEN MIST

The warming of the scalp during the signature head massage relieves tension. This leaves the customer feeling thoroughly relaxed.

\*For details, please refer to technical manual and instructional videos.

### Change in test subjects' heart rates over the course of a 30-minute YUME SPA treatment



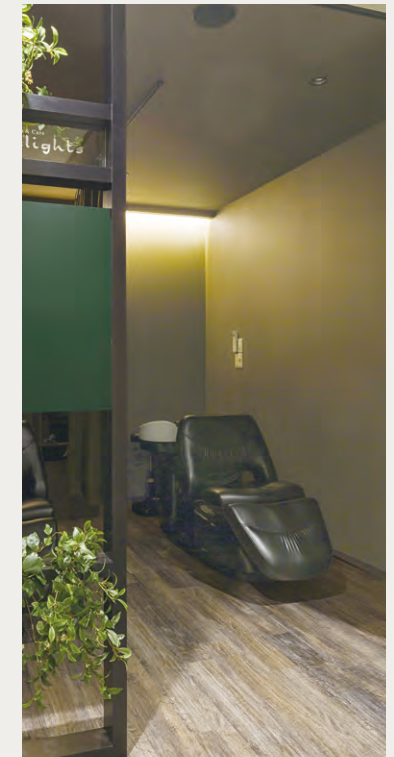
Vertical axis: average heart rate Horizontal axis: Time N=24 According to a 2011 Takara Belmont study

# ENVIRONMENT

Create a sensory space that offers the ultimate comfort

From the moment your customer steps into this sensory space, the process of healing begins. This experience will make them want to return time and again.

*YUME Series-equipped hair salons and spas*



- Actual colour may differ or vary from colours in the printed catalogue.
- The manufacturer reserves the right to change models, descriptions and specifications without prior notice.



2-1-1, Higashishinsaibashi, Chuo-ku, Osaka 542-0083, Japan Tel: +81-6-6213-5945

YY-BS-549 2303 10OP VI

<https://www.takarabelmont.co.jp/global/>

