

# LEGEND

Luxury Barber Chair



 **TAKARA BELMONT**

# Mastership

**Real comfort - it's all in the details.**

The Legend was created by incorporating the best features from our men's grooming line into one iconic chair. We combined our experience and knowledge to bring you an electric barber chair that's luxurious, reliable, and responsive. This is the mark of our 90+ years of craftsmanship.

Craft a legendary client experience with the Legend.



\*Outlet on the chair body is not available for some countries.





## Our cutting edge ES Leather was developed from a thorough study on sitting comfort.

The extremely soft and elastic ES leather is a trademark of the iconic chair. Conforming perfectly to a customer's body, it envelops them in any position.

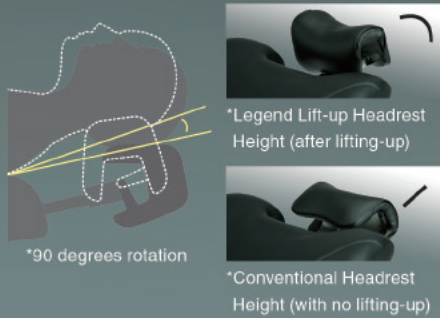
\*Gathering of backrest fabric subject to variance depending on product.

### Headrest

#### ■ Lift-up type

(only for Luxe type and Full-Flat type)

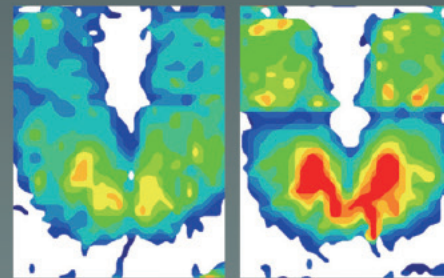
Not only can the Legend's headrest rotate 90 degrees, but its gentle curve tapers to your customer's neck and head for added support.



#### ■ Standard type



### Ideal distribution of the body pressure compared to other conventional barber chairs.



Legend Chair

Conventional Barber Chairs

## Equipped with the "Full-Flat Legrest System"

The Full-Flat Legrest System adds new value for barbers and customers, providing opportunities to expand or enhance your services menu.



#### Introduce or strengthen your relaxation menu

With the ability to elevate customers and recline them to a nearly horizontal position, you can provide facial care, head spa services and extended shampoo services with ease.

### Shockless Mechanism Equipped As Standard Feature



Our shockless system provides smooth action during chair position transitions. (Only for Luxe type and Full-Flat type)



## LED Auto-return switch

Adopted LED light for the auto-return switch. One push of the auto-return switch brings the customers back to sitting position. LED light makes it easier to locate the position of the switch.

\*Outlet on the chair body is not available for some countries.

## Footstep

### ■ Full Flat Type

(only for Full-Flat type)

Full Flat type step comes with foot cushion. When fully flat, placing a foot cushion on the raised step comfortably supports the ankles and provides an even more comfortable lying posture.



### ■ Normal Type

( Standard type  
Luxe Type  
Prime Type )



## Low Initial Height & Step

The chair has a low initial height of 470mm as well as a footstep with a low initial height of 55mm, allowing easy approach for all customers.



## Detachable footstep

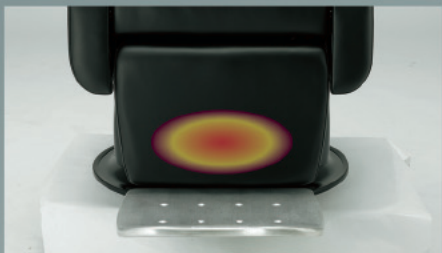
Footstep can be removed easily with no tool for easy approach for elderly or customers in wheel chairs.



## Legrest Heater

Heater installed at legrest only for Prime Type and Full-Flat Type. Increases the customer relaxation.

(\* This function is not available for some countries.)



## Optional accessory

Service Table  
EX-95T

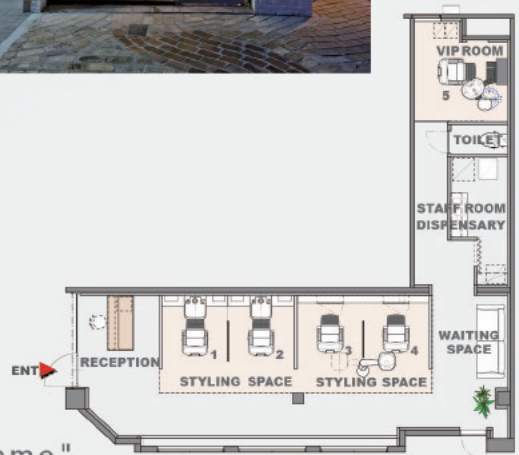


\*Outlet on the chair body is not available for some countries.





Salon name  
"PH7"



Salon name  
"Tre's Sympa Homme"

## Color Variation

Our newly developed vinyls are very soft and smooth. Choose which color best fits your space from the multiple options we have presented.



ES12 Brown



ES14 Camel



ES13 Red



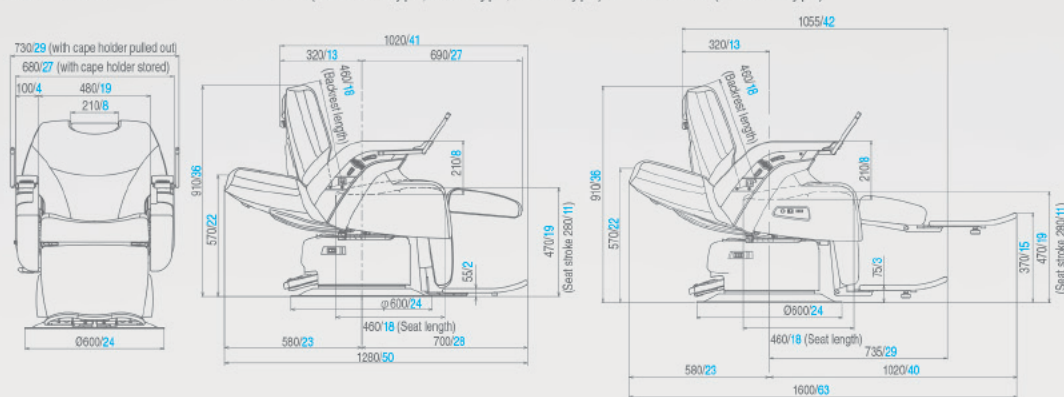
ES8 Black

## Dimensions

■ Front view

■ Side view (Standard Type, Luxe Type, Prime Type)

■ Side view (Full-Flat Type)



\* Dimensions and specifications are subject to change without notice due to design improvement.

Seat standard values are indicated (Unit: mm/inch).

## Type Variation Specification

Type	Headrest	Legrest	Legrest Heater	Shockless Movement	Weight(Chair)
Standard Type	Normal	Normal	X	X	135kg/298lbs
Luxe Type	Lift up type	Normal	X	X	135kg/298lbs
Prime Type	Lift up type	Normal	O (*not available for some countries)	O	135kg/298lbs
Full-Flat Type	Lift up type	Full-Flat	O (*not available for some countries)	O	130kg/286lbs

Rated voltage	AC 110 V	AC 120 V	AC 220 V	AC 230 V	AC 240 V
Rated frequency	60 Hz	50/60 Hz	50/60 Hz	50/60 Hz	50 Hz
Rated current (Standard/Luxe)	3.9 A	4.8/3.9 A	1.8/2.0 A	2.0 A	2.1 A
Rated current (Prime/Full-Flat)	4.2 A	5.1/3.9 A	2.0/2.2 A	2.2 A	2.3 A

\* Dimensions and specifications are subject to change without notice due to design improvement.

\* Colors shown here might vary slightly with the actual product due to being printed material.

## TAKARA BELMONT GROUP

<b>JAPAN</b>	<b>TAKARA BELMONT CORPORATION, OSAKA HEADQUARTERS</b> Tel: +81-6-6212-3523 E-mail: beauty@takara-net.com Web: www.takarabelmont.co.jp/global/
<b>U.S.A.</b>	<b>TAKARA BELMONT USA, INC.</b> Tel: +1-732-469-5000 E-mail: webmaster@takarabelmont.com Web: www.takarabelmont.com
<b>CANADA</b>	<b>TAKARA COMPANY, CANADA, LTD.</b> Tel: +1-905-822-2755 Toll-Free: +1-800-268-5351 Web: www.takarabelmont.ca
<b>BRAZIL</b>	<b>TAKARA BELMONT PARA AMERICA DO SUL INDUSTRIA E COMERCIO DE MOVEIS LTDA.</b> Tel: +55 11 3147-4040 E-mail: takbel@takarabelmont.com.br Web: www.takarabelmont.com.br
<b>U.K.</b>	<b>TAKARA BELMONT (UK) LTD.</b> Tel: +44-20-7515-0333 E-mail: hairdressing@takara.co.uk Web: www.takara.co.uk

<b>GERMANY</b>	<b>TAKARA BELMONT FRANKFURT OFFICE</b> Tel: +49-69-2972-8090 E-mail: info@takarabelmont.de Web: www.takara.co.uk
<b>KOREA</b>	<b>TAKARA BELMONT (KOREA) CORPORATION</b> Tel: +82-2-413-5977 E-mail: info@takarabelmont.co.kr Web: www.takarabelmont.co.kr
<b>TAIWAN</b>	<b>TAKARA BALMONT (TAIWAN) CORPORATION</b> Tel: +886-2-8789-0809 E-mail: takara.tw@msa.hinet.net Web: www.takara-tw.com
<b>CHINA</b>	<b>TAKARA BELMONT (SHANGHAI) CORPORATION</b> Tel: +86-21-6272-8166 E-mail: takara-china@takarabelmont.com.cn Web: www.takarabelmont.com.cn/
<b>SINGAPORE</b>	<b>TAKARA BELMONT SINGAPORE PTE. LTD.</b> Tel: +65-6316-1110 E-mail: hairdressing@takarabelmont.sg Web: www.takarabelmont.com.cn/

Actual color may differ from color in printed catalog.  
The manufacture reserves the right to change models, descriptions, and specifications without prior notice.